

Wood Burning Fireplaces
BEAUTY BY DESIGN





IMAGINE THE FIREPLACE OF YOUR DREAMS.

Nothing beats the crackle and comfort of a fire – and now with so many beautiful design options to choose from, your fireplace can perfectly reflect your sense of style.

ROYALTON

THE DETAILS MAKE THE DIFFERENCE.

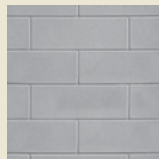
The Royalton has earned a strong reputation for classical style, superior performance and outstanding features. The detailed brick interior with classic masonry look, up to 42" viewing area and available glass doors make this fireplace a stunning addition to your home's décor.

STANDARD FEATURES

- 36" or 42" viewing areas
- Convenient ash lip
- User friendly front damper handle locks in open/closed positions
- Traditional firebrick interior

OPTIONAL FEATURES

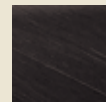
- Bi-fold glass doors available in Black and Stainless Steel
- Variety of vented gas logs available*



Traditional Firebrick Interior



Bi-Fold Glass Doors



Black



Stainless Steel

*The Royalton is not approved for use with vent free log sets.

SOVEREIGN

EXCEPTIONAL VALUE AND DEPENDABILITY.

Some things never go out of style – like the beauty and old world craftsmanship of a Sovereign wood burning fireplace. Authentic masonry design details and attractive finishing options allow you to create a masterpiece with long-lasting value.



Sovereign Series SA36R shown with Traditional Firebrick & Bi-Fold Doors



Sovereign SA42C shown with Traditional Firebrick

STANDARD FEATURES

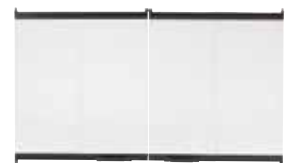
- 36" or 42" viewing areas
- Radiant or heat-circulating options
- Traditional firebrick interior

OPTIONAL FEATURES

- Three glass door options available in Black or Stainless Steel
- Variety of gas logs available



Traditional Firebrick Interior



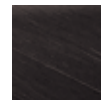
Bi-Fold Doors



Gasketed Doors
(for circulating models only)



Grand Vista Doors



Black



Stainless Steel

BILTMORE

TRANSFORMATIONAL AMBIANCE.

The Biltmore is the largest wood burning fireplace in the industry – an impressive distinction. The expansive viewing area (available in up to 50"), classic masonry style and clean face design becomes the natural focal point of any room, and the perfect place to relax.



Biltmore SB80 Series shown with Traditional Firebrick



Cover Image
Biltmore SB100 Series shown with Traditional Firebrick



Biltmore SB60 Series shown with Traditional Firebrick

STANDARD FEATURES

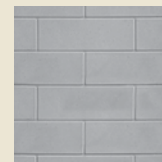
- Three sizes available; 50", 42" and 36"
- Clean face design enables finishing materials to be applied up to firebox opening
- Can be installed flush with floor or on a raised hearth
- Traditional or herringbone firebrick interior

OPTIONAL FEATURES

- Three glass door options in black
- Variety of gas logs available



Herringbone
Firebrick Interior



Traditional
Firebrick Interior



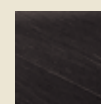
Bi-Fold Doors



Grand Vista Doors



Contour Screen Doors



Black



Ashland Series shown with Herringbone Firebrick

ASHLAND

CUSTOMIZE TO MEET YOUR NEEDS.

The Ashland delivers on every level – customize the design with three available sizes and stylish finishing options. The large firebox gives you a front row seat for unforgettable fires, while the proven history of performance provides peace of mind for many years to come.

STANDARD FEATURES

- Flush-hearth design for seamless finishing
- Two standard outside air kits for enhanced venting

OPTIONAL FEATURES

- Glass bi-fold doors in Black or Bronze
- Traditional or herringbone firebrick interior
- Variety of gas logs available



Herringbone Firebrick Interior



Traditional Firebrick Interior



Bi-Fold Doors



Black



Bronze

DESIGNER

A ROOM WITH A VIEW. Now you can enjoy the incomparable warmth and beauty of your wood burning fireplace from two rooms at once. Get twice the ambiance with a designer see through fireplace.



DSR42 Designer Series

STANDARD FEATURES

- Two sizes available; 42" and 36"
- Available in see-thru model
- Authentic masonry appearance
- Clean face design
- Outside air kit for enhanced venting

OPTIONAL FEATURES

- Glass bi-fold doors in Black or Stainless Steel
- Variety of gas logs available



Bi-Fold Doors



Black



Stainless Steel
(36" only)

WOOD BURNING FIREPLACES

MODEL	ROYALTON-BE36	ROYALTON-BE42	SOVEREIGN-SA36(R/C)	SOVEREIGN-SA42(R/C)
Dimensions (Actual)	41" W x 39 1/2" H x 21 3/8" D	47" W x 39 1/2" H x 21 3/8" D	42" W x 41 1/4" H x 22 3/4" D	48" W x 41 1/4" H x 22 3/4" D
Dimensions (Framing)	42" W x 39 3/4" H x 21 1/2" D	48" W x 39 3/4" H x 21 1/2" D	43" W x 41 1/2" H x 23" D	49" W x 41 1/2" H x 23" D
Viewing Area	36" W x 21" H (756 sq. in.)	42" W x 21" H (882 sq. in.)	36" W x 21 3/8" H (769 1/2 sq. in.)	42" W x 21 3/8" H (897 3/4 sq. in.)
Radiant or Circulating	Radiant	Radiant	Radiant/ Circulating	Radiant/ Circulating
Design Certified	UL/ULC	UL/ULC	UL/ULC	UL/ULC

MODEL	BILTMORE-SB60/SB60HB	BILTMORE-SB80/ SB80HB	BILTMORE-SB100/ SB100HB	ASHLAND-ASH42
Dimensions (Actual)	44 1/2" W x 59 1/4" H x 27 1/2" D	50 1/2" W x 59 1/4" H x 27 1/2" D	60 5/8" W x 70 1/2" H x 29 1/2" D	52 7/8" W x 74 1/8" H x 27 1/2" D
Dimensions (Framing)	45 1/2" W x 59 3/4" H x 28" D	51 1/2" W x 59 3/4" H x 28 1/2" D	61 5/8" W x 71" H x 30 1/2" D	53 7/8" W x 74 1/2" H x 28 1/2" D
Viewing Area	36" W x 28 1/2" H (1026 sq. in.)	42" W x 28 1/2" H (1197 sq. in.)	50" W x 33" H (1650 sq. in.)	42" W x 38" H (1596 sq. in.)
Radiant or Circulating	Radiant	Radiant	Radiant	Radiant
Design Certified	UL/ULC	UL/ULC	UL	UL

MODEL	DESIGNER-DSR36	DESIGNER-DSR42
Dimensions (Actual)	40" W x 41 1/4" H x 24" D	47" W x 58 7/8" H x 28" D
Dimensions (Framing)	41" W x 41 1/2" H x 23" D	48" W x 39 1/8" H x 27" D
Viewing Area	36" W x 20 7/8" H (751 1/2 sq. in.)	42" W x 23" H (966 sq. in.)
Radiant or Circulating	Radiant	Radiant
Design Certified	UL/ULC	UL/ULC

Refer to installation manual for all framing & installation guidelines.

Your Majestic Dealer:



For more information about Majestic products, please visit MajesticProducts.com or MajesticFireplaces.ca.



To avoid personal injury or property damage, the product described by this brochure must be installed, operated and maintained in strict compliance with the instructions packaged with the product and all applicable building or fire codes. Contact local building or fire officials about restrictions and installation inspection requirements. All photographs and drawings on this brochure are for illustrative purposes only and are not intended for, nor should they be used as a substitute for the instructions packaged with the unit. Appearance and specifications of the product are subject to change without notice. ©2017 Hearth & Home Technologies



Warning: Hot glass will cause burns. Do not touch glass until cooled. Never allow children to touch glass.