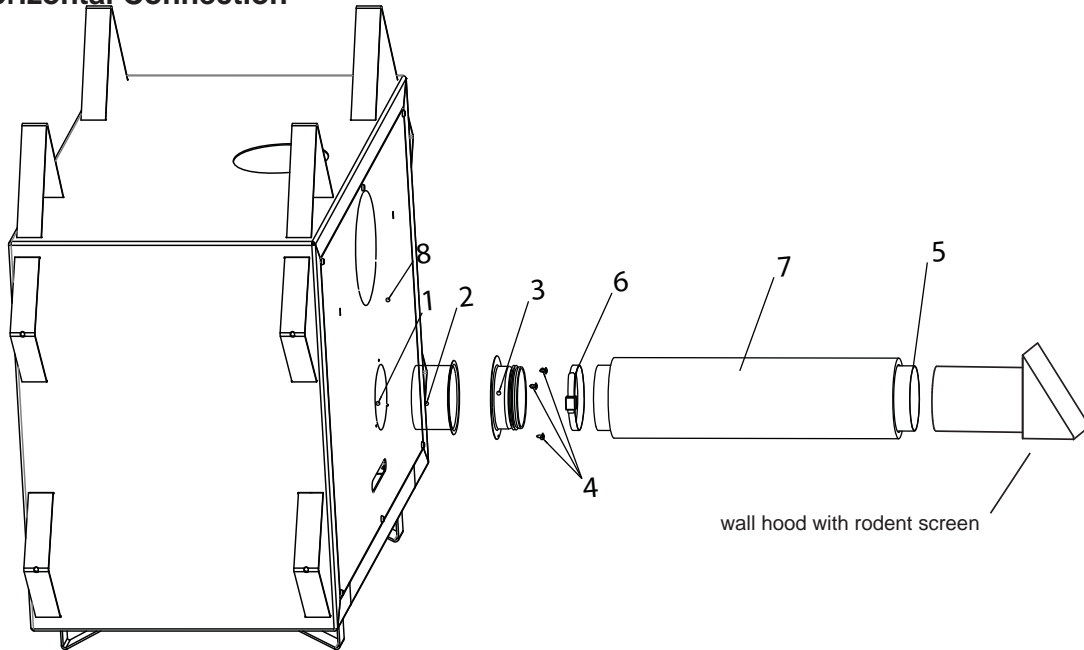


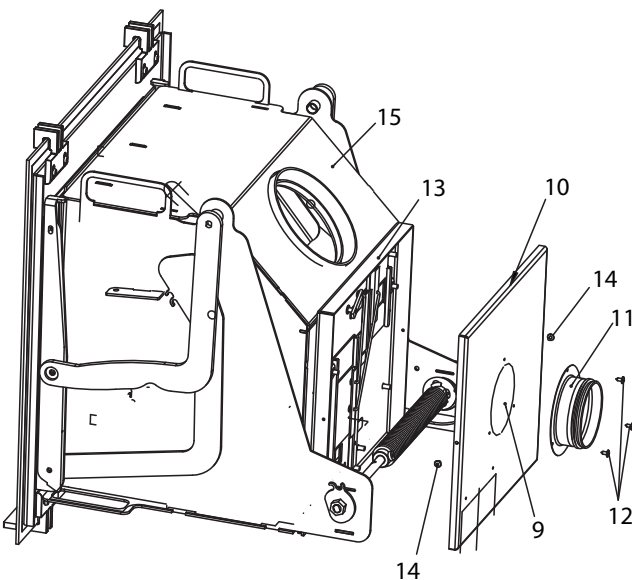
## Horizontal Connection



Perform the following steps for the outer case (8):

- Break out the pre-cut round plate (1) in the rear of the outer case (8) outwards.
- Mount the connecting pipe without gasket (2) in the rear of the casing so that the pipe's collar is located outside of the casing.
- Place the connector bushing (3) up against the rear of the casing, with the pipe facing outwards so that the collar is above the collar of the previously mounted pipe, and so that the pre-drilled holes in the pipe and casing are located above one another.
- Screw the pipe in place using the three enclosed self-tapping screws (4).
- Attach the flexi-hose (5) to the connector bushing (3) and fasten with the clamp (6). Pull the insulation sleeve (7) over the flexi-hose.

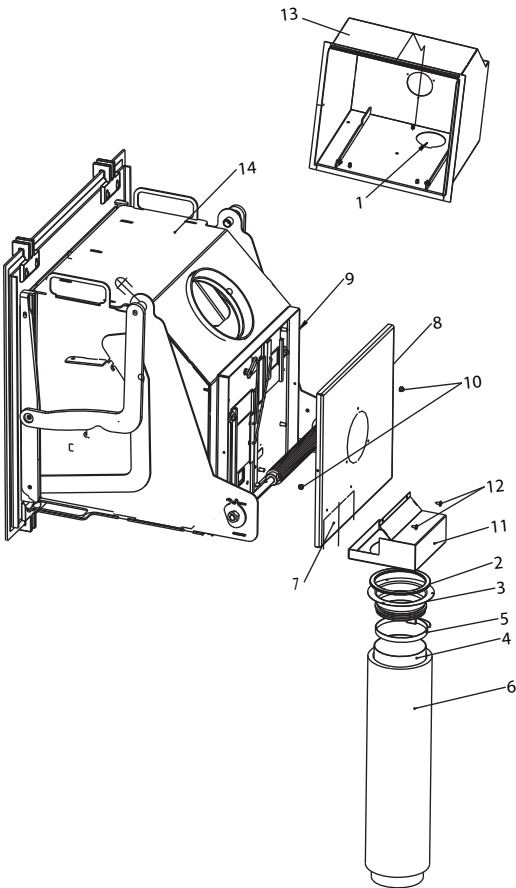
Perform the following steps for the inner cassette:



- Break out the pre-cut round plate (9) in the middle of the automatic cassette cover (10).
- Attach the connector bushing (11) to the automatic cassette cover (10) using three self-tapping screws (12).
- Fasten the cover (10) to the automatic cassette (13) using two self-tapping screws (14), one on either side of the cover.
- Push the inner cassette (15) into the outer case (8) so that the pipe (11) on the insert goes evenly into the pipe (2) on the inside of the casing.

## Vertical connection

Perform the following steps for the outer case (8):



- Break out the pre-cut round plate (1) in the bottom plate.
- Attach the gasket (2) to the connector bushing (3).
- Push the flexi-hose (4) through the hole (1) in the bottom plate.
- Attach the flexi-hose (4) to the connector bushing (3) and fasten with the clamp (5).
- Pull the flexi-hose (4) back again so that the connector bush (3) reaches into the hole (1), the collar underside facing the bottom plate. The cut-out in the bottom plate leaves room for the clamp when it is turned correctly.
- Pull the insulation sleeve (6) over the flexi-hose (4).
- Perform the following steps for the insert:
  - Break off the pre-cut rectangular plate (7) in the automatic cassette cover (8).
  - Fasten the cover (8) on the automatic cassette (9) using two self-tapping screws (10), one on either side of the cover.
  - Fasten the box (11) to the automatic cassette cover (8) using two screws (12) in the pre-drilled holes.

- When the casing (13) has been mounted, push the insert (14) into the casing. Make sure it clicks into place in the bottom plate.

## Install the Ember protection strip

