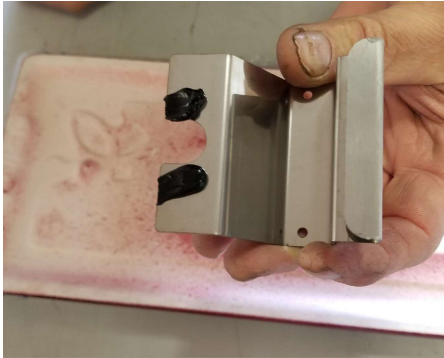


Replacing the tiles on the La Nordica Milly including warming oven.

1. Make sure that the clip will fit properly on the tile before applying any RTV.
2. Place a couple of dabs of RTV on the clips for one tile as shown.



3. Slide clip into place on tile. See photos for proper placement.



4. (Optional) Allowing RTV to cure will help with attaching the screws. See instructions for RTV curing.
5. Use screws to attach the clips to the door.